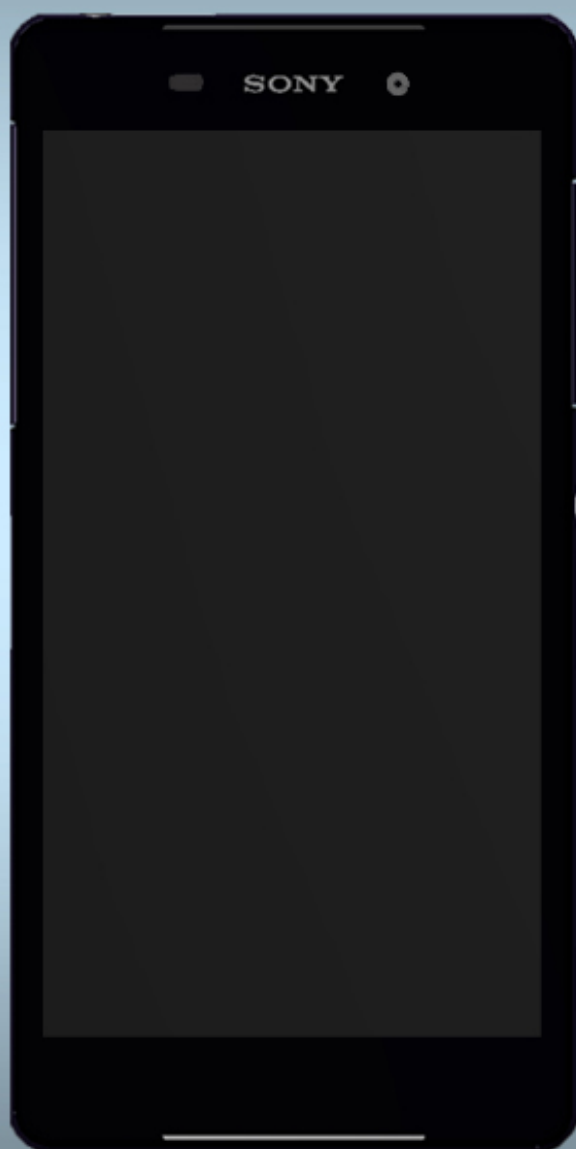


SONY

make.believe

Repair Movies

- mechanical -



Xperia™ Z2
L50t, L50u

CONTENTS

1 Movies 3

1.1 Disassembly 3

1.2 Reassembly 3

2 Revision History 4

To view the embedded repair movies in this document, Acrobat Reader version 8 (or later) and Flash Player version 8 (or later) must be installed on your computer.

For best picture quality, select “Actual size” or “100%” as zoom level in Acrobat Reader. To magnify while keeping an acceptable picture quality, increase the zoom level to 200%.

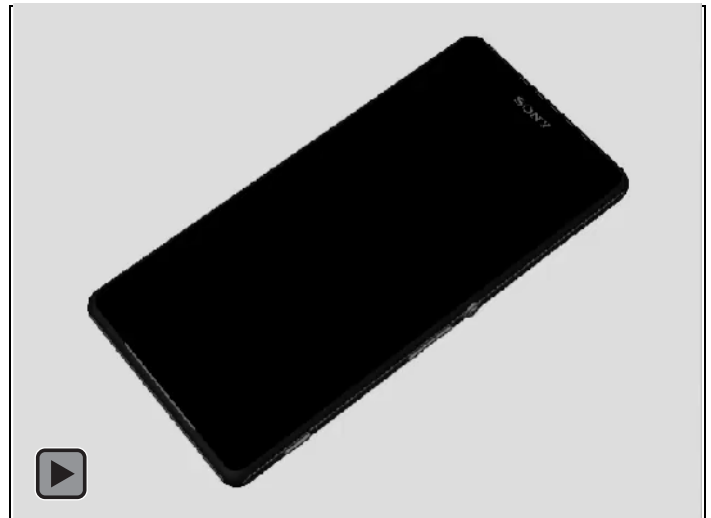
If the movies appear to be jerky or blurred when viewing on-line, this is probably caused by the connection speed being too slow. In that case, right-click with the mouse on the document name and select Save Target As to download the repair movie document for off-line viewing.

For general information about repair movies, refer to 1220-1333: Generic Repair Manual - mechanical

1 Movies

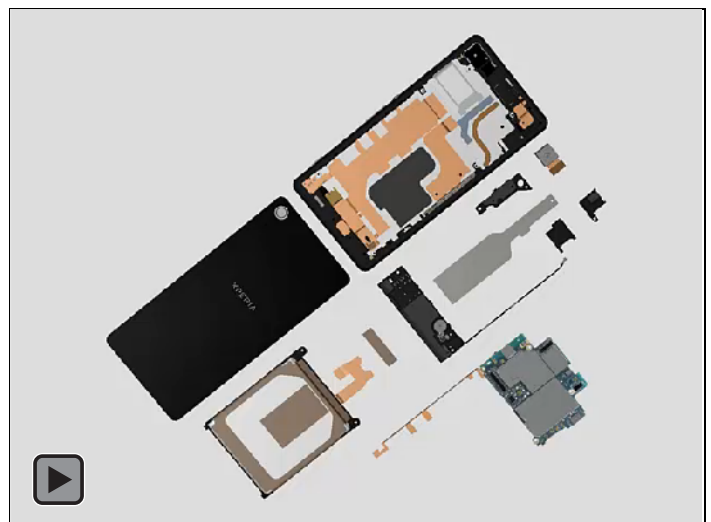
1.1 Disassembly

- SIM Tray
- Adhesive Battery Top (a) and Back Panel Assy (b)
- Sheet FPC Battery
- Battery
- Ant WLAN/BT Holder Assy
- Camera
- Holder 2nd Mic
- Antenna Speaker Box Assy & PBA Sub & RF Cable
- Main PBA & RF LCP FPC Assy (a) and Display Frame Assy (b)



1.2 Reassembly

- Display Frame Assy (a) and Main PBA & RF LCP FPC Assy (b)
- Antenna Speaker Box Assy & PBA Sub & RF Cable
- Holder 2nd Mic
- Camera
- Ant WLAN/BT Holder Assy
- Battery
- Sheet FPC Battery
- Adhesive Battery Top (a) and Back Panel Assy (b)
- SIM Tray



2 Revision History

Rev.	Date	Changes / Comments
1	2014-Apr-01	Initial release
2	2014-Apr-25	Added L50u
3	2014-Jun-27	Update pressure value and duration for Back Panel Assy, new pressure value and duration is 494N±60N for 20 sec.